

"we sell solutions not promises"

Over a decade in providing solutions on concrete waterproofing, concrete repairs & floor coating system.



# COMPANY P R O F I L E



Peaceville, San Isidro, City of Talisay, Cebu, Phillippines 6045  
Tel. Nos. (6332) 424 7473, 505 8936, 0922 886 8370, Email: info@rimabs.com

[www.rimabs.com](http://www.rimabs.com)

# OUR COMPANY

"we sell solutions not promises"

Established in 2008, Rimab's Specialty Building Products, Inc., is a trading and a PCAB licensed contractor General Engineering and General Building including waterproofing, concrete repairs, floor treatments and coating, civil, concrete, painting that has continuously provided its customers with quality workmanship at affordable prices.

Rimab's is focused on addressing the combined need for quality, speed, professional service and reliability of its numerous institutional clients and takes great pride in completing its projects on or before time.

Rimab's is a duly registered in the Security & Exchange Commission (SEC) and Bureau of Internal Revenue (BIR).

Rimab's Specialty Building Products, Inc. is managed and operated by professionals with more than 30 years of experience, knowledge and skills on the field of construction, waterproofing, floor treatments and coatings and concrete repairs. We are committed to deliver high quality products, guaranteed service and satisfaction to our clients.



*"We offer a comprehensive range of materials in order to provide optimal solutions for the waterproofing of new buildings and restoration of old buildings."*



## OUR VISION

To become the market leader in our field of industry. By continuously improving our performance, we will work to provide our customers with outstanding project performance and gain distinction through quality.

## OUR MISSION

Maintaining the highest level of **Professionalism, Quality, Products and Services** at fair and market competitive price. We strive into building a strong relationship with all customers and provide them the best options and solutions.

## OUR VALUES

Uncompromising commitment to **quality, safety, health and the environment**. We cultivate positive relationships with our employees, clients and partners. We show respect, stand up for our own needs, communicate with courage and show gratitude in our words and actions. We integrate transparency, honesty and business ethics into all aspects in all we do...

# OUR COMPANY

*"we sell solutions not promises"*



## Company Details

Business Name

**Rimab's Specialty Building Products, Inc.**

Business Address

Peaceville, San Isidro, Talisay City, Cebu

**Contact Details**

Telephone: (032) 424 7473, 505 8936, 491 7472

Mobile: +63 922 8868370

Fax: (032) 424 7473

E-mail: info@rimabs.com

Website: www.rimabs.com

Date Started

October 2008

Date of Incorporation

December 11, 2012

**Company Registration**

Type of Company

Corporation

SEC Registration

CS2012322009

TIN No.

436-860-546-000

SSS Registration

06-1746937-7

PHILHEALTH Registration

012-000017210

PAG-IBIG Registration

2007 62550008

PCAB License

43296

**Banks**

Banco de Oro

Tabunok Branch, City of Talisay, Cebu 6045

(032) 273-6643, (032) 273-6644

Metrobank

Tabunok Branch, City of Talisay, Cebu 6045

(032) 272-0425

# OUR COMPANY

*"we sell solutions not promises"*



## Quality Assurance

**Rimab's Specialty Building Products, Inc.** recognises quality as an essential element which provides the company with its success within the construction industry.

Achieving quality objectives as a company requires the full cooperation of team members at every level and thus the company has committed itself insure that each team member is individually trained in their respective fields to produce high quality results consistently - making quality everyone's responsibility is the key.

The Staff and Management is committed to achieve and maintain a quality standard of product and services that exceed the requirements of our clients.



# PARTNER INTERNATIONAL COMPANY

## Concrete Waterproofing Systems (Australia)



### WORLDWIDE SUPPLIER OF NEXT-GENERATION WATERPROOFING PRODUCTS

Concrete Waterproofing Systems (CWS) is an international manufacturer and supplier of “state of the art” waterproofing products, who is committed to helping clients around the world achieve a leaf-free projects. CWS products waterproof concrete for critical commercial and residential constructions for the design life of the structure. Likewise, they provide lifetime protection against concrete corrosion and degradation for major infrastructure projects such as wharfs, tunnels and bridges.

The fact that CWS products have been used and recommended by Consultants, Contractors and Developers in Asia, Australia, Europe, Africa, the Middle East and the Americas, is testimony to our concrete waterproofing technology.

Life-time waterproofing, super-fast application and environmental safety protect our environment, drastically speed up your project construction time and reduce your total product cost.

#### THE PROBLEM

Buildings are designed to last around 50+ years. Waterproofing membranes typically last only 10 to 15 years. It doesn't make sense!

Often membranes are damaged during initial construction and the source of the leak can be impossible to find.

**The result: they may leak for their entire life.**

It is not **IF** they leak – it is **WHEN** will they leak?

Replacing them is disruptive and very expensive.

#### CONCRETE PROTECTION

Corrosion prevention on wharfs, bridges, marine and civil-engineering structures.

Waterproofing wharfs and bridges to prevent corrosion is essential to prolong their lifespan.



**LEAK-FREE WATERPROOFING.ALWAYS!**



**SUPER-FAST APPLICATION**

Up to 6000m<sup>2</sup> per day compared to 100m<sup>2</sup> for a membrane. Trafficable, six hours after application



**ENVIRONMENTALLY FRIENDLY**

Non-toxic. No VOC'S. Can earn LEED points.



What we offer

# PRODUCTS & SERVICES

*"we sell solutions not promises"*

## WATERPROOFING

POLYURETHANE (Concealed & Exposed Type)  
CEMENTITIOUS CRYSTALLINE WATERPROOFING  
WATERSTOPS  
TORCH-APPLIED MEMBRANE  
EPOXY TANK LINING  
SPRAY-APPLIED WATERPROOFING  
PU FOAM INJECTION  
ACRYLIC ELASTOMERIC WATERPROOFING  
ANTI-ROOT WATERPROOFING



## FLOOR TREATMENT & COATINGS

SELF-LEVELLING EPOXY FLOOR COATING  
CHEMICAL RESISTANT COATING  
POLYURETHANE COATING  
PU MORTAR FLOORING  
SELF-LEVELLING MORTAR SCREED  
CAR PARK FLOOR COATING  
EPOXY FLOORING  
POLISHED CONCRETE & GRINDING



## CONCRETE REPAIR & RETROFITTING

CRACK INJECTION  
SPALLING & HONEYCOMB CONCRETE REPAIR  
CARBON FIBER STRUCTURAL STRENGTHENING  
REINFORCED CONCRETE JACKETING  
CONCRETE ADHESIVES  
REBAR SCANNING AND CORING



## CONCRETE ADMIXTURES

INTEGRAL WATERPROOFING  
HIGH RANGE WATER REDUCING SUPERPLASTING  
CURING COMPOUND



## FIREPROOFING

GENERAL ENGINEERING AND  
GENERAL BUILDING WORKS

EXTERIOR WALL WATERPROOFING  
& PAINTING



"we sell solutions not promises"

# What we offer PRODUCTS AND SERVICES



## WATERPROOFING

RIMAB'S SPECIALTY BUILDING PRODUCT, INC., offers a comprehensive range of materials in order to provide optimal solutions for the waterproofing of new buildings and restoration of old buildings. Our high quality and long lasting waterproofing systems sustainably increase the life cycle of buildings. By preventing moisture damage and expensive repairs can be avoided.

### MODIFIED SILICATE "gel" SPRAY-APPLIED WATERPROOFING



CWS100 is state-of-the-art waterproofing which is ideal for large areas of concrete, especially those exposed to thermal stress such as rooftops, car parks, roofdecks, podiums, landscape areas, wharfs and marine structures, water treatment tanks, bridges, facades and monuments, pre-cast panels, balconies, ledges, etc.

It is sprayed onto cured concrete, seals cracks and forms a **15-20mm barrier inside the concrete** which waterproofs and protects the concrete for the life of the structure. Ultimate waterproofing and protection of concrete and steel reinforcement. CWS100 forms a barrier inside the concrete that waterproofs and protects the concrete for the lifetime of the construction.

CWS100 comprises a complex blend of modified silicates and reactive ingredients which is sprayed onto cured concrete. It reacts with calcium to form an insoluble gel that **seals cracks in the concrete up to 2.2mm (0.087")** and subject to design mix – it will remain reactive in the concrete to seal future hairline cracks (subject to design mix), in the presence of water.

#### ENVIRONMENTALLY FRIENDLY – Earn LEED Points

Non toxic, Suitable for use with drinking water, Does not create landfill like membranes, No VOCs.

#### NO CONCRETE PROTECTION

#### INCREASE CONCRETE HARDNESS

Increases concrete hardness to 9 on Mohs scale (Corundum hardness), making the concrete harder than granite (which is only 6-7 of Mohs scale).

#### TRAFFICABLE IN 6 HOURS

#### CWS100 CANNOT BE DAMAGED ON -SITE

#### PROTECTS AGAINST WATER, CHLORIDE and SULPHATE INGRESS

Increases resistance to chemical attack.



# What we offer PRODUCTS AND SERVICES



## Continuation Waterproofing

### LIQUID-APPLIED WATERPROOFING MEMBRANE

#### MODIFIED POLYURETHANE MEMBRANE WATERPROOFING (Concealed Types)

One-part ready to use coal tar free bitumen modified, moisture curing polyurethane membrane. After curing it provides a tough highly elastomeric, anti-root impervious barrier to moisture. Suitable for application by brush, roller or towel, etc. Use for waterproofing of roof decks, balconies, terraces, wet areas (under tiles), basements, tunnels and plant boxes.

#### WATER-BASED POLYURETHANE MEMBRANE WATERPROOFING (PUD)

Polyurethane Dispersions (PUD), is water based, polyurethane hybrid waterproofing membrane that cures to a permanently flexible seamless membrane with good adhesion to a wide range of substrates. Unlike more traditional bitumen based products, PUD does not brittle with age, exposure to ultra violet radiation or weathering. Use a waterproofing of Rooftops (concealed), Balconies/Terraces (concealed), Wet areas (under tiles) in Toilet & Bath, Kitchens etc. Waterproofing, sealing and protection on different kind of roof such as tile roof, metal roofs, fiber-cement panels, etc.

### FOOD-GRADE EPOXY TANK LINING SYSTEM

A two-component, 100% solids epoxy compound formulated from high-grade epoxy resins and modified polyamide curing agents especially for storage tanks. It is lead-free, food-grade and non-toxic when fully cured.



#### NON MODIFIED POLYURETHANE UV RESISTANCE MEMBRANE WATERPROOFING (Exposed Type)

A ready to use, highly elastic, cold applied polyurethane waterproofing which cures into a membrane with excellent abrasion, mechanical, chemical, thermal and UV resistance. Use as a flooring material for sport facilities, waterproofing and floor coating for helipads, exposed car parks, balconies, podium decks, chemical plant, mechanical and electrical room, etc.

#### ACRYLIC ELASTOMERIC WATERPROOFING

High performance UV resistant water based coating 100% acrylic emulsion for use as waterproofing paint on walls and roofs. It possesses outstanding exterior durability, excellent elasticity and elongation properties. Highly recommended for waterproofing of roof deck, concrete gutters, toilet and bath, G.I. Roofing, Roof tiles and as protective coating for Polyurethane Foams.

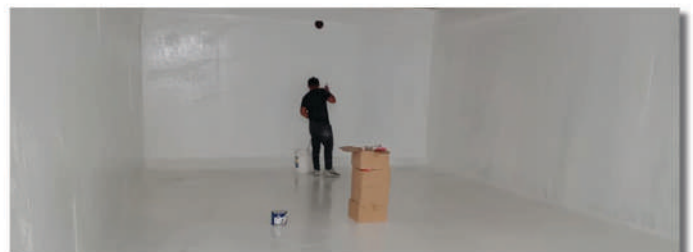
### CEMENTITIOUS WATERPROOFING

#### CRYSTALLINE WATERPROOFING SYSTEM

A cementitious powder, consisting of active chemicals wherein crystal are formed once in contact with water which migrates into the concrete thus filling the voids and capillary tracts. Use for waterproofing of vertical foundation walls and slab, tunnel, roof-deck, parking decks, plaza and terraces, plant boxes, water reservoir, toilets and baths, swimming pools, etc.

#### FLEXIBLE CEMENTITIOUS WATERPROOFING

2-component flexible cementitious waterproofing membrane that consists of selected cement blend with well graded fillers and synthetic resin. It could be applied unto damp substrates by brush or roller and capable of bridging hairline cracks. Uses and application: Swimming pools and features, wet areas (under tiles), roof decks, balconies, terrace, ledges, water retaining structures, domes, firewalls.





"we sell solutions not promises"

# What we offer PRODUCTS AND SERVICES



## Continuation Waterproofing

### TORCH-APPLIED WATERPROOFING MEMBRANE

Torch-applied membrane waterproofing is a type of waterproofing method used in various places like flat roofs and balconies, just to name a few. It creates a comparatively strong membrane layer that is made up of polymers and bitumen that protects that layer against moistures and dampness. Uses and applications: Roof decks, balconies, terraces, toilet and baths, plant boxes.

*Thickness & Finishes: 3mm sanded , 4.5kg granulated/slatted, 4mm sanded with ANTI-ROOT property.*

## WATERSTOPS

### BENTONITE SWELLABLE WATERSTOP

A unique sealing compound which expands in a controlled manner when exposed to moisture, forming a compression seal in concrete joints.

### CHEMICAL WATERSTOP

A special "seal and grout tube system" complete with tubing and attachments for use in connection with PU Foam Injection. For sealing of construction joint. Best used as an economical and effective alternative to traditional waterstop.



## SEALING PRODUCTS

### PU FOAM INJECTION / PU GROUTING SYSTEM

Polyurethane (PU) Injection is a fluid resin that can be injected into cracks, fissures and other voids in concrete building structures. When injected into concrete during a leak repair, within minutes the polyurethane undergoes a chemical transformation from a liquid to a solid.

The suitability of polyurethane as a waterproofing method stems from its inherent properties. It has a very short curing time, which makes it a highly ideal material for sealing active leaks. It has low viscosity allowing it to comfortably seal tiny cracks after curing on moisture. Following an injection, polyurethane will cure and retain its flexibility, which allows for subsequent movement in the structure while keeping the voids sealed, hence preventing the leak from occurring.

### LEAK STOPPING BY PLUGGING SYSTEM

Hydro-Plug is a low viscous liquid which is mixed with fresh cement to form quick-setting cement used to stop running water through deep cracks and holes in concrete and masonry surfaces.

Hydro-Plug can be used internally or externally as a waterproof plugging mortar or where rapid setting and early strength gain is required: Plugging water leaks and seepage, sealing leaking cracks, sealing wet surfaces, etc.



# What we offer PRODUCTS AND SERVICES

"we sell solutions not promises"



## ADMIXTURES

### LIQUID INTEGRAL WATERPROOFING ADMIXTURE

Rebrite L is a liquid waterproofing admixture based on selected raw materials for use in all portland cement concrete and mortar mixes. Rebrite L is chloride free, and will not corrode embedded metals or effect setting time of portland cement. Its water reducing property enables higher compressive strength to be obtained at the same workability.

Advantages: Increases the plasticity of the mix, Improves workability, Facilitates compaction, Allows a reduction of the gauging water without loss of workability, Reduces the possibility of shrinkage and consequential cracking and crazing, Reduce the permeability, Does not contain calcium chloride and therefore cannot cause corrosion of stressing wires in pre- stressed concrete and does not, in any way, affect the setting time of the Portland cement.

### CRYSTALLINE INTEGRAL WATERPROOFING ADMIXTURE

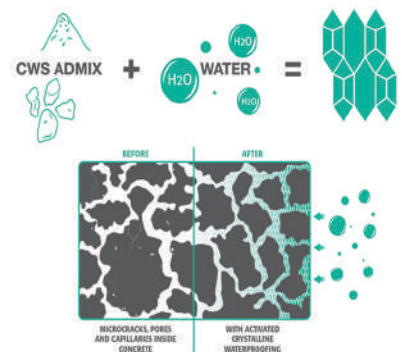


CWS Admix is a crystalline reactive waterproofing compound applied as an admixture in fresh concrete. Its ability to self-seal cracks is one of crystalline technology's most unique and useful features, and can help to dramatically reduce the long-term maintenance and repair costs of a concrete structure.

CWS Admix forms crystals within the pores and capillaries in the concrete, effectively blocking the passage of water. It also seals cracks in the concrete up to **0.4mm (1/64")** and will seal future hairline cracks in the presence of moisture.

CWS Admix has been extensively tested and complies with **EN: 12390 – 8** which is the European standard to prove permeability under 5 bars of hydrostatic pressure within 72h.

**ENVIRONMENTALLY FRIENDLY** – Helps earn LEED points  
**NON TOXIC**  
**SUITABLE FOR USE WITH POTABLE WATER**  
**DOES NOT CREATE LANDFILL LIKE MEMBRANES**  
**NO VOCs**



DOSAGE: CWS Admix has a fixed dosage per cubic meter of concrete (**0.8 kg/m<sup>3</sup> or 22oz/yd<sup>3</sup>**), regardless of concrete mix design.

### WATER REDUCING, SET-ACCELERATING & SUPERPLASTICIZING ADMIXTURE

Rebplast 100, A high range water-reducing, set-accelerating and superplasticizing admixture that gives outstanding strength and workability to a well designed concrete mix. It is supplied as a ready to use fluid of fluidizing and dispersing agents based on naphthalene sulfonated product and blended with selected ligno sulfonates. Rebplast 100 when introduced into the concrete mix at a specified dosage, accelerates the setting of cement and gives the concrete a high early strength development.

# What we offer PRODUCTS AND SERVICES



## CONCRETE REPAIR, STRENGTHENING & RESTORATION

Concrete can deteriorate for a variety of reasons, and concrete damage is often the result of a combination of factors. Concrete repair is the process of fixing a hardened concrete surface that, over time, has lost the ability to hold the binding concrete materials together due to damage or environmental exposure. Concrete repair is appropriate for cracks, physical impacts, chipped out surfaces or surface scaling. Concrete structures, when exposed to elements like salt water, CO2 and chloride, could be penetrated all the way through the concrete to the steel reinforcement, which results in corrosion.

### EPOXY CRACK INJECTION SYSTEM

Concrete cracks are repaired using different techniques and methods, such as epoxy injection depending on how wide, long and/or deep the crack is. Most of the concrete cracks are related to shrinkage, heat, wrong joint placements, over stress and loading conditions and movements caused by external factors. This method is suitable for horizontal, vertical and overhead application on cracks. Epoxy crack injection should be conducted only after an engineering evaluation by a Structural Engineer.

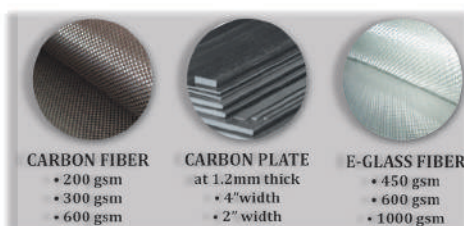
### CARBON FIBER REINFORCED POLYMER RETROFITTING

Retrofitting of concrete structures with Carbon Fiber Reinforced Polymer (CFRP) has become an increasingly dominant use of the material in structural engineering applications. Such uses include increasing the load capacity of existing structures (such as existing parking garages) that were designed to tolerate far lower service loads. Other uses include seismic retrofitting, and repair of damaged concrete structures. Retrofitting with CFRP in many instances can be a cost-effective method of structural concrete strengthening. CFRP is also widely used to strengthen concrete structures that have lost reinforcing steel mass due to corrosion and concrete deterioration.

### SPALLING, HONEYCOMB and CAVITIES REPAIR

Spalling of concrete is a breakaway of the concrete surface, extending to the top layers of reinforcing steel. It leaves the concrete surface patchy and pitted while exposing aggregate underneath. As soon as spalling is spotted, it should be repaired; otherwise, it may impact the integrity of the concrete element and affect the ultimate capacity of the member.

- Repair system by patching with a high-strength cement-based grout.
- Repair system by epoxy grouting.



# What we offer PRODUCTS AND SERVICES

"we sell solutions not promises"



## FLOOR TREATMENT AND COATINGS

### RIMAB'S CONCRETE FLOOR POLISHING SYSTEM



LONG-LASTING  
PERFORMANCE



COST-EFFECTIVE



SUPERIOR DURABILITY



SLIP RESISTANCE

Polished concrete becomes more and more popular among retail and commercial customers. Restaurant owners and industrial facility managers admit its versatility. Above all, they emphasize low maintenance and hardwearing surface. People love its minimalistic, clean, and contemporary appeal.

Customers decide the level of polished sheen that best suits their aesthetics and use. The gloss ranges from matte to high-gloss. Customization of polished concrete has no limits. Whether for commercial, industrial or residential use, those flooring options come in a large variety of designs.

RIMAB'S offers a wide variety of polished concrete finishes for any industry. We install polished concrete floors in residential, commercial, and industrial facilities. Above all, our well-trained crew achieves perfect results in a fraction of time.

### AGGREGATE EXPOSURE LEVELS

Aggregate exposure refers to the amount and size of aggregates seen on the floor. Every concrete mix has its unique properties. The size, density, and distribution of aggregates depend on concrete mix design. Above all, there are three levels of exposure: **cream, salt and pepper, and aggregate exposure.**

The cream finish has a fine-cement polished look. It requires less grinding. In general, the quality of floor flatness dictates the final look for cream polishing. It may have trowel marks.

Salt and pepper create a flatter surface with a rich texture of small aggregates.

Aggregate exposure gives the flattest surface. It requires more time for grinding but gives an ultimate look and clarity to polished concrete.



# What we offer PRODUCTS AND SERVICES



## FLOOR TREATMENT AND COATINGS

At Rimab's Specialty Building Products, Inc., we offer various floor coating and treatment services using durable products from leading manufacturers. Regardless of which flooring solution you choose, we have professional and knowledgeable installers which will make a big difference in the success and longevity of your floor. It is important to choose a contractor based on their experience and reliability not because of their lower price.

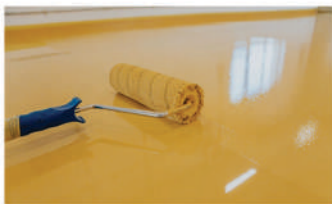
### SELF-LEVELLING EPOXY FLOOR COATING

2-part, coloured epoxy resin. Applied to concrete with normal up to medium heavy wear e.g. storage and assembly halls, maintenance workshops, garages, car parks, maintenance hangars and for wet process areas, e.g. beverage and food industry.

Epoxy flooring is an extremely durable and hard-wearing flooring that offers a number of benefits, which makes it ideal for everything from commercial & industrial applications to residential applications.

### CEMENTITIOUS SELF-LEVELLING MORTAR TOPPING

A ready-to-use, self-levelling screed for old and new interior floors. Application thickness is between 3mm and 8mm. It is a ready-to-wet mortar for preparing substrates before laying thin floor coverings. Use for interior floors where an even and smooth surface is required e.g. houses, hospitals, hotels, office and commercial buildings.



### POLYURETHANE FLOOR COATING

2-component, High-UV resistant attractive satin finish with excellent resistance to acids, alkalis, solvents, salts and water. Use as a topcoat for flooring and on properly primed concrete flooring and steel structures in chemical processing, pulp, paper, petro-chemical and similar industries.

It may be applied as a finishing topcoat to other coatings such as epoxies, inorganic zinc primers and other polyurethane coatings and cold applied polyurethane waterproofing systems.

### PU MORTAR FLOORING

A self-priming, troweled polyurethane screed system with self-sealing finish. It cures to an extremely hard, high impact resistance mortar which exhibits excellent abrasion, wear, temperature and chemical resistance. It is a slip resistant polyurethane screed formulated specifically for food and beverages and cold storage facilities with temperature resistance from -45°C to 120°C subject to high volumes of foot and wheeled traffic applied in a seamless joint free matt finish. The standard thickness is nominal 3-6mm.

### LIQUID FLOOR HARDENER AND DUSTPROOFING

Clear waterbase, non-toxic, odorless, penetrating, impregnating, silicate product. These compounds hardened the concrete surface rendering it dust free and because of the pore blocking action the penetration of liquids such as mineral oil, petrol, alcohol, water and alcoholic solutions are reduced.

"we sell solutions not promises"

# What we offer PRODUCTS AND SERVICES



## Continuation Floor Coatings & Treatments

### METALLIC EPOXY



Metallic Epoxy is an enhanced version of Conventional Epoxy. Conventional Epoxy is mainly found in carparks, factory floors, etc. Whereas Metallic Epoxy is specially used in Residential & Commercial areas to beautify the space, giving it the benefits Conventional Epoxy lacks.

Unlike Conventional Epoxy (generally Two Layers), Metallic Epoxy is a unique multi layered epoxy system that primarily incorporates metallic pigment powder mixed into a clear epoxy. This mix allows for a homogeneous blend, producing an exotic-looking lava flow or pearlescent effect after installation.

The metallic pigments move through the epoxy as it cures and can be agitated with a paintbrush or roller to create effects such as swirls, ripples, craters, or waves. When the Epoxy hardens, these pigments are locked in place, resulting in a beautiful, three-dimensional look. Each Metallic Epoxy finish is unique due to the fluid nature of the metallic pigment suspension.

Metallic epoxy resin is also non-toxic, making it safe for use in both commercial and residential settings. It is a popular material because it is easy to clean and maintain. With proper care, a floor that has been painted with metallic epoxy paint can last for many years.



**WE'RE DOING SOMETHING DIFFERENT!**



# What we offer PRODUCTS AND SERVICES



## FIREPROOFING



Fireproofing is to extend the time an item can be exposed to fire before it fails. In construction this is referred to as passive fire protection as it does not extinguish the fire but rather prevents failure. Typically this is done by applying a fireproofing material to structural members.

While the term fireproofing may seem to imply that an item cannot burn or fail, this is not the case. In reality, no building material or system is completely fireproof. All physical structures and components have limits and can be irreparably damaged by fire. A more proper term would be fire resistant as it only protects the structure for a prescribed period of time.

Although there are different materials and methods of doing this, all systems follow the same basic principle. A product is used to separate the item from the fire, which will insulate and delay the transfer of heat. This can be achieved in different ways but the basic principle always stays the same.

Regardless of the above, fireproofing a structure is an effective way of preserving structural integrity for a period of time during a fire. This is important as it allows people a chance to escape and gives firefighters the ability to safely enter the structure and provide fire rescue services.

### FIREPROOFING STEEL

In the case of a fire, building material can reach highly unsafe temperatures. Overheated steel can become weakened and collapse, and overheated concrete can expand and burst if the moisture content trapped inside becomes too hot. This expansion can lead to exploding concrete walls that both rapidly deplete your building's structural integrity and pose an immediate danger to anyone in the vicinity.

### REASONS YOUR BUILDING NEEDS FIREPROOFING

Fireproofing is essential for a few reasons. Most importantly, it helps maintain your building's structural integrity for a longer time during a fire, allowing occupants to evacuate and first responders to enter safely to help put out the fire.

If emergency teams are able to put out the fire, fireproofing will also help prevent your building from collapsing, which will, of course, reduce property damage and can help reduce personal injury as well.



# PROJECT REFERENCES

*"we sell solutions not promises"*

COMPLETED PROJECTS - CWS 100 Spray-applied Biochemically Modified Silicate "gel"  
Partial list of major projects



CALYX RESIDENCES - Swimming Pool @ 10/F , I.T. Park, Lahug, Cebu City  
Re-waterproofing works - Torch-applied membrane waterproofing removed and applied with CWS100



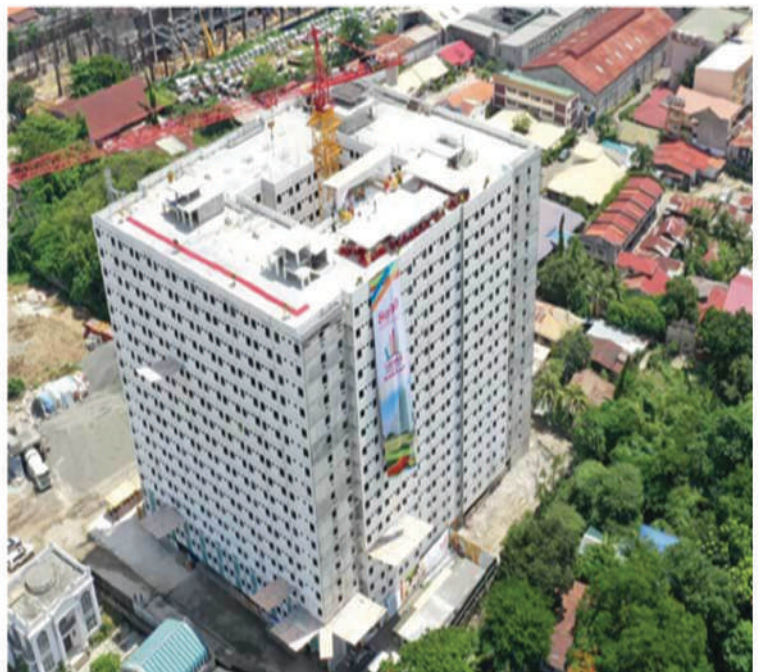
BORRAMEO COMMERCIAL BUILDING - Roof Deck  
Pinamungahan, Cebu 400.00 sq.m.



URATEX WAREHOUSE - Roof Deck  
Brgy. San Jose, Tacloban City, Leyte 3,100.00 sq.m.



THE PROMENADE MACTAN - Deck slab & fountains  
Mactan, Lapu-Lapu City, Cebu 900.00 sq.m.



COCO PALM RESORT - Roof Dec  
Danao City, Cebu 900.00 sq.m.



# PROJECT REFERENCES

*"we sell solutions not promises"*

## COMPLETED PROJECTS - Partial list of major projects



LIWAYWAY MFG. CORP. - OISHI Plant  
Lilo-an, Cebu



PERSIMMON CONDOMINIUM  
MJ Cuenco Ave., Cebu City



AMANI RESIDENCES BUILDING. C  
Lapu-Lapu City



ROBINSON'S RESIDENCES - TOWER 2  
Cebu City



SYMFONI ALTO CONDOMINIUM  
V. Rama Ave., Cebu City



TAFT EAST GATE  
Mabolo, Cebu City



GRAND RESIDENCES TOWER 4  
Kasambagan, Cebu City



BONIFACIO DISTRICT - FAUSTINA CENTER  
Panagda-it, Cebu City



NEW CARBON PUBLIC MARKET  
Cebu City



LinkSY BLDG. QUALCOM SITE 2  
Dumaguety City



STO. NINO CHAPEL  
Senior Citizens' Park, Cebu City

# PROJECT REFERENCES

*"we sell solutions not promises"*

## COMPLETED PROJECTS - Partial list of major projects



AIM GLOBAL BUILDING  
Pope John Paul 11 Ave., Cebu City



JOYLAND BUILDING  
U.N. Ave., M.H. Marcelo Fernan Bridge, Mandaue City



PANGLAO BLUEWATERS RESORT  
Sitio Daurong,, Danao,, Panglao Island, Bohol



MANDANI BAY - (Hardscape Area)  
North Reclamation, Mandaue City



ST. THERESA'S COLLEGE - Sr. Highschool Building  
Cebu City



THE GRID  
San Rafael, Ilo-Ilo City



ROBINSON'S RESIDENCES TOWER 1  
Cebu City



AMANI GRAND  
Airport Road, Lapu-Lapu City



BAYANIHAN FLAT  
Lapu-Lapu City



DEPARTMENT OF AGRICULTURE REGION OFFICE  
Ilo-Ilo City



CEBU MEDICAL CENTER  
North Reclamation, Mandaue City

# PROJECT REFERENCES

*"we sell solutions not promises"*

COMPLETED PROJECTS - Partial list of major projects



ATENEO DE CEBU, MANDAUE CITY, CEBU



ONE MADISON PLACE TOWER 1&2, ILOILO



REEF TOWER 1&2, LAPULAPU CITY



HYUNDAI SHOWROOM, MABOLO, CEBU CITY



NORTHSTAR CONDO, NORTH RECLAMATION, CEBU CITY



PHIL-AM LIFE BUILDING, CEBU CITY



PARKMALL, MANDAUE CITY



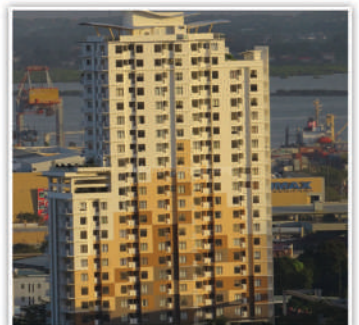
GAGFA I.T. TOWER, PANAGDA-IT, CEBU CITY



ONE WORLD CENTER, MACTAN NEWTON



EAGLE'S NEST CONDO, TALAMBAN, CEBU CITY



MABOLO GARDEN FLAT, CEBU CITY



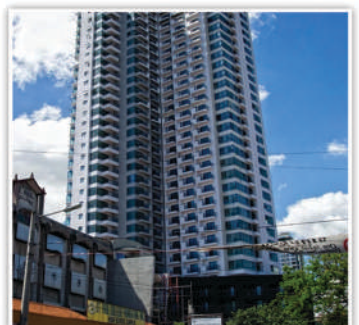
CEBU NORMAL UNIVERSITY, CEBU CITY



COURTYARD MARRIOTT HOTEL, ILOILO CITY



SANTONI'S PLACE CONDO, CEBU CITY



CITY SUITES RAMOS TOWER, CEBU CITY

# PROJECT REFERENCES

*"we sell solutions not promises"*

## COMPLETED PROJECTS - Partial list of major projects



MACTAN INT'L. AIRPORT TERMINAL 1 & 2



SPIANADA RESIDENCES, CEBU CITY



DAPITAN CITY HALL, MIS. ORIENTAL



MEZZO HOTEL, KASAMBAGAN, CEBU CITY



MACTAN SHANGRILA HOTEL, LAPULAPU CITY



MARCO POLO HOTEL (GRAND BALLROOM EXPANSION, CEBU CITY)



SEDA HOTEL, CEBU BUSINESS PARK, CEBU CITY



SEDA HOTEL - IT PARK, CEBU CITY



GUSTILO TOWN CTR., MANAPLA, NEGROS OCC.



U.C. SR. HIGHSCHOOL BLDG. BANILAD, CEBU CITY



ASIA PREMIER CONDO, I.T. PARK, CEBU CITY



MIDPOINT TOWERS, MANDAUE CITY



CARCAR CITY HALL, CEBU



LOT 8 CONDO, MABO, CEBU CITY



TOYOTA CEBU SOUTH, MANDAUE CITY

# PROJECT REFERENCES

*"we sell solutions not promises"*

## COMPLETED PROJECTS - Partial list of major projects



HOOPS DOME, LAPU-LAPU CITY



SMEAG GLOBAL EDUCATION, CEBU CITY



GOV'T. CENTER, CONSOLACION, CEBU



COMMERCIAL BLDG., BANAWA, CEBU CITY



PAG-IBIG WT TOWER, CEBU CITY



U.C. MAMBALING CAMPUS, CEBU CITY



MONESTARY OF HOLY EUCHARIST, LINDOGON, SIMALA, SIBONGA, CEBU



SMEAG BUILDING 2, MABOLO, CEBU CITY



TOYOTA TACLOBAN CITY, LEYTE



SARROSA INT'L. HOTEL, CEBU CITY



JS PORTAL BLDG., DUMAGUETE CITY



DORMITORY BLDG., BANILAD, CEBU CITY



PEACEVALLEY SUBD. WATER TANK, CEBU CITY



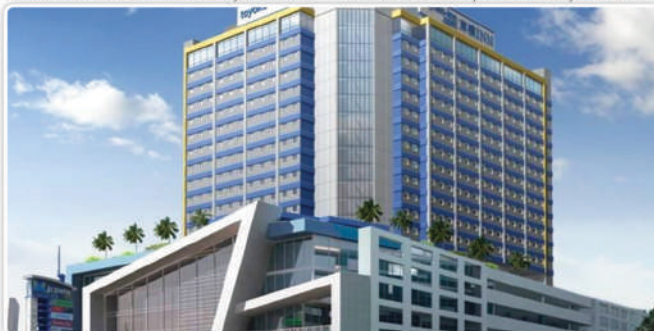
PHIL. COASTGUARD, LAGUINDINGA, MIS. ORIENTAL



TOYOTA CALBAYOG CITY, SAMAR



LIVING HOPE HOSPITAL, MAASIN, LEYTE



TOYOKO INN, MANDAUE CITY



INSULAR SQUARE, MANDAUE CITY

# PROJECT REFERENCES

*"we sell solutions not promises"*

## FLOOR COATING & TREATMENT

Completed Projects - Partial list



NISSAN GATEWAY MOTORS (SERVICE AREA) SELF-LEVELLING EPOXY FLOOR COATING  
V. Rama Ave., Cebu City



FOTON CEBU SOUTH SHOWROOM (MAINTENANCE AREA) SELF-LEVELLING EPOXY COATING  
Lawaan, Talisay City, Cebu



PHIL-AM LIFE BUILDING (ELECTRICAL & MECHANICAL ROOMS) EPOXY FLOOR COATING  
Cebu Business Park, Cebu City



ONE MADISSON PLACE TOWER 1 & 2 (PARKING DECK) SELF-LEVELLING EPOXY COATING  
Ilo-Ilo City



GAISANO COUNTRY MALL (CHILLER, FREEZER, MEAT & FISH DISPLAY AREA) PU MORTAR FLOORING  
Banilad, Cebu City

# PROJECT REFERENCES

*"we sell solutions not promises"*

## CONCRETE REPAIR, STRENGTHENING & RESTORATION

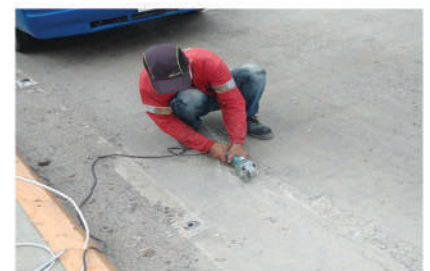
Completed Projects - Partial list



EPOXY CRACK INJECTION - NORTH ROAD, MANDAUE RECLAMATION AREA  
Mandaue City, Cebu



CRACK REPAIR & CONCRETE SPALLING REPAIR - DUMLOG BRIDGE  
Brgy. Dumlog, Sibonga, Cebu



CRACK REPAIR & CONCRETE SPALLING REPAIR - BERTHING/MOORING STRUCTURE  
Asian Grain Corporation, City of Naga, Cebu



CRACK REPAIR - PULSATOR CLARIFIER TANK  
Manila Waters Project, Carmen, Cebu



VARIOUS CONCRETE REPAIR WORKS ON COMMERCIAL AND RESIDENTIAL BUILDINGS  
Cebu City



# PROJECT REFERENCES

*"we sell solutions not promises"*

## CONCRETE REPAIR, STRENGTHENING & RESTORATION Completed Projects - Partial list



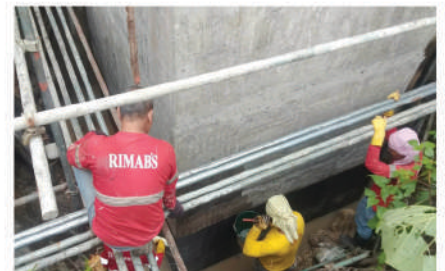
BRIDGE GIRDER STRENGTHENING - INSTALLATION OF CARBON FIBER PLATE  
Pakigne Bridge, Pakigne, Minglanilla, Cebu



PIER GIRDER & PILE CAP REPAIR - CRACK & SPALLING CONCRETE REPAIR  
Asian Grain Corporation - City of Naga, Cebu



COLUMNS & RETAINING WALLS - HONEYCOMBS REPAIR  
The BLOQ 2 Building, Sikatuna Street, Cebu City



SHEAR WALL - Carbon Fiber Strengthening  
School Building , Cebu City



# RIMAB'S

SPECIALTY BUILDING PRODUCTS INC.

Peaceville Subd., San Isidro, City of Talisay  
Cebu Phils., 6045



-  (6332) 5058936, 4247473
-  (6332) 4247473
-  +63 922 886 8370
-  info@rimabs.com
-  www.rimabs.com
-  Rimab's Specialty Bldg. Products inc.

*"we sell solutions not promises"*

